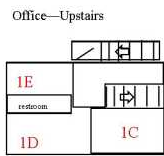
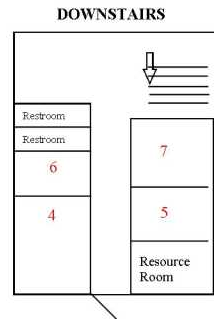
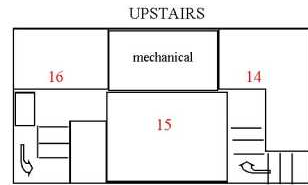
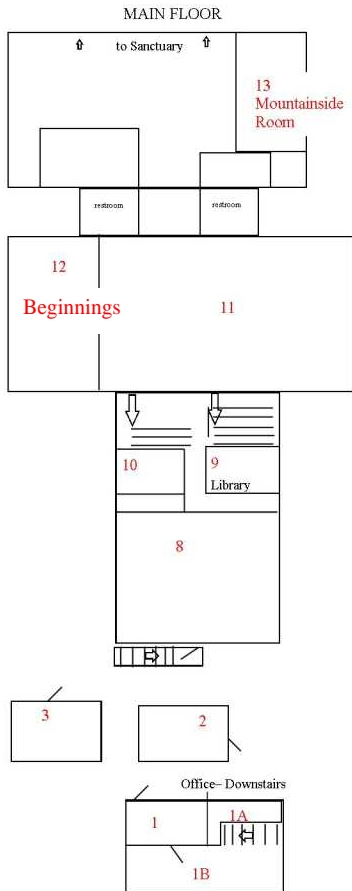


FACILITY MAP

Class Room Map 2010



Updated on Thursday, August 14, 2009

Classrooms and Classroom Placement

Key Question: How old were you on August 15, 2009?

Place according to answer

Class Schedule 9:15 for Fall (Beginning 09/13/09)

Infant/Toddler Nursery – Beginnings Room #12(0-30 months)

3/4 Year Olds – room 7

5 years old through 5th grade - Room 14

Class Schedule 11:00

Infant/Toddler Nursery – room 12 (0 months-3 years old)